

Expertise and determination lead to great optimization for BP Chembel sludge stream

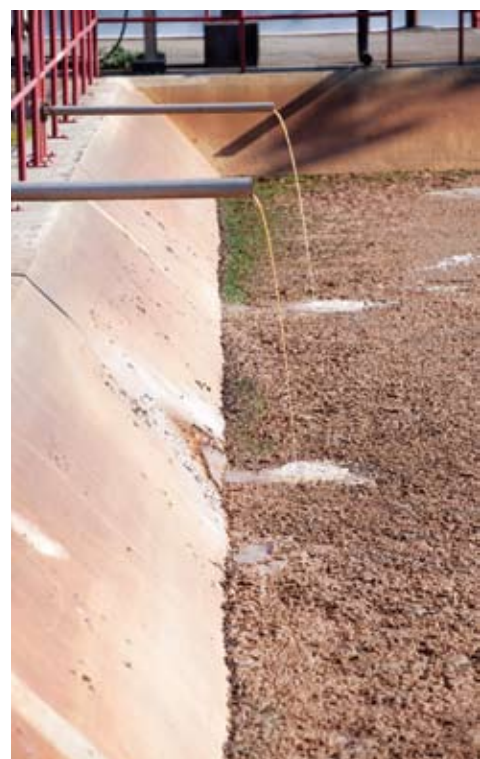


Chris Somers

Walter Janssen

At its facilities in Geel (Belgium), BP Chembel produces the high-quality chemicals paraxylene (PX), purified terephthalic acid (PTA) and purified isophthalic acid (PIA). These are used to manufacture polyester fibres and resins which are then used in e.g. textiles, plastic (PET) bottles, automotive and aerospace components, pipelines, and satellite dishes. BP enjoys a Total Waste Management (TWM) partnership with Indaver since 2006. In addition to giving safety and the environment first priority and in its efforts to achieve 'the lowest Total Cost of Ownership', BP, together with Indaver, has reviewed the way it handles sewage sludge. This has led to a more sustainable treatment technology with significant cost savings. Walter Janssen, Procurement Specialist and Chris Somers, Environmental Engineer explain what this project entails exactly.

“Dynamic approach results in important optimizations”



Sustainable treatment with significant savings

The specific sludge stream from the water treatment plant at BP is substantial. This type of waste requires a specific pre-treatment, which prompted Indaver to carry out an extensive market study. Some existing partners explored the potential of dewatering techniques and their cost. These showed that if an adjustment was made to the process, costs could be saved. BP switched from a chamber filter press with lime and ferric chloride recipe to an on-site centrifugal press with polymers. Initially, BP – based on past experience – thought that this solution was not viable. But further research was made possible through the commitment of both BP and Indaver project manager Steve Schrauwen.

Thinking 'Out of the box'

The calorific value contained in the filter cakes remaining after dewatering is recovered in Indaver's grate incinerator in Doel. Thanks to this innovative and sustainable approach, efficiency is much higher, costs are lower, and only one operator is needed on-site instead of two. It was moreover possible to implement the adjustment without compromising quality or safety. It is the combination of all these elements that made the difference for BP.

The duration of the sludge campaigns has been halved. Indaver has also proven that, as an inspired waste expert, it could also spot opportunities outside the regular TWM partnership. This ability to think 'outside the box' is what BP values most, because it shows Indaver's customer-oriented approach and response to BP's needs and expectations. Through its advisory and supporting role combined with a precisely laid out project scheduling, Indaver proved to be a neutral, pro-active and reliable partner.



Contact person:
Steve Schrauwen,
Project Manager
Mobile phone + 32 478 88 17 58

“Indaver's ability to think “outside the box” is unique and valuable.”